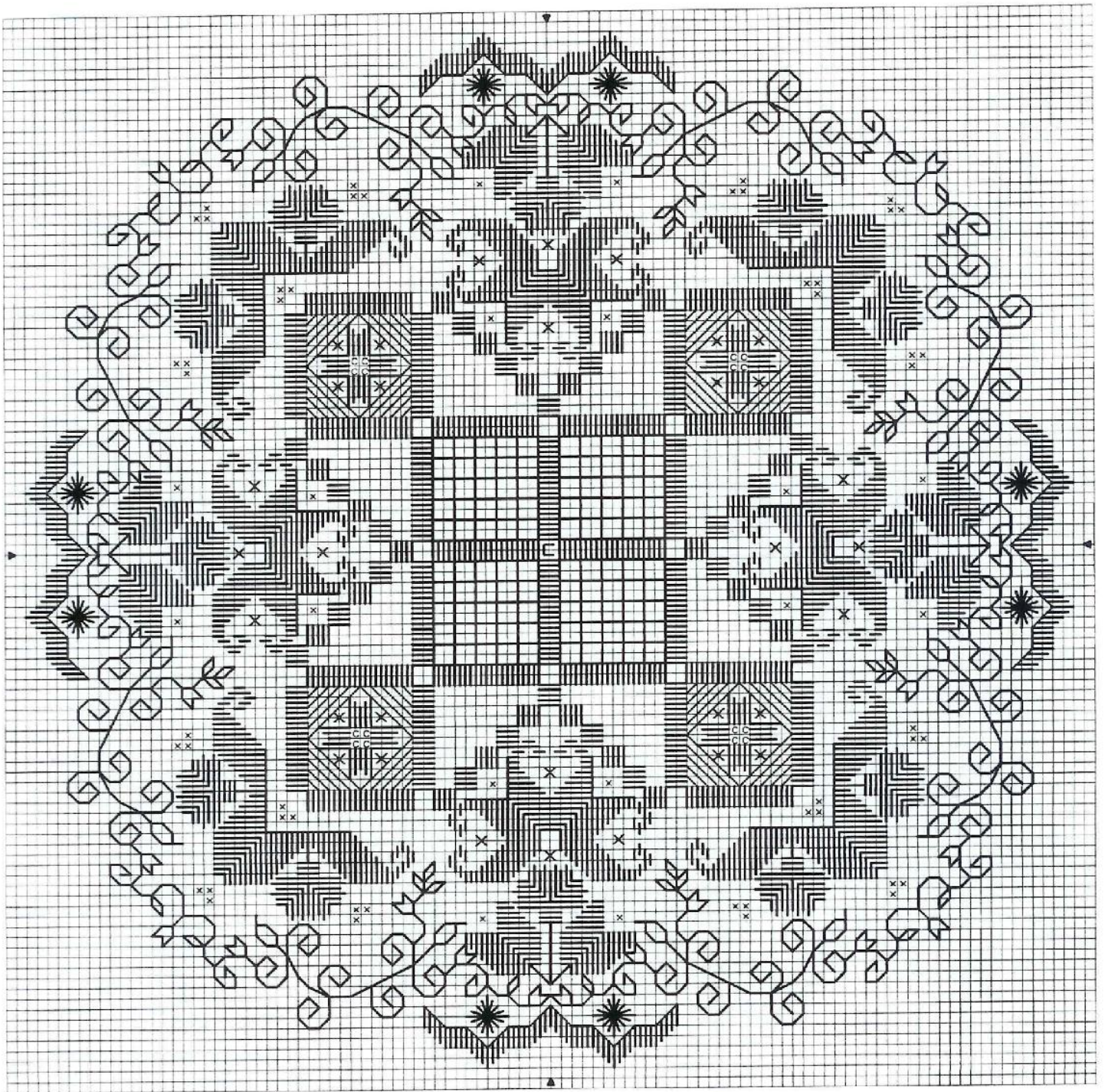


Cottage Dreams



Design By: Judy Dixon

Copyright © Sew To Be Seen Designs - 2004

Sew to be Seen Designs
By Judy Dixon

Cottage Dreams

Thread, Bead & Fabric List

South African Perle #8 – Ecu
Pearsalls Silk – Light Rose – 078
Gloriana Variegated Silk – Green Gables – 120
The Thread Gatherer Silk 'N' Colours – Honey Mauve
The Thread Gatherer Silk 'N' Colours – Prairie Winter
Kreinik #4 Braid – 013
Mill Hill Beads Number – 03039
2 ½ mm round pearls – Cream
28 count Antique White Jobelan

Bead Symbols	Number & Colour
X	03039 = Gold
C	Cream Pearls
Stitch Count = 100 x 100	Design Area = 7.1 x 7.1 inches

Notes

Cottage Dreams model was stitched on 28 count Antique White Jobelan.

Please note: - every square on the main graph = two fabric threads. Note the change in scale on the stitch diagrams – graph lines = one fabric thread. (I.e. –every square = one hole on the fabric).

Refer to the main graph for stitch placement, but follow the stitch diagrams for special stitches.

I always use a frame; it helps keep an even tension for neat stitches.

I strive to present this design error free, however human error can occur, if you have any comments you can e-mail me on judydixon@mursley.freemove.co.uk or why not visit my web-site at www.sewtobeseen.co.uk

This design has been prepared by Sew To Be Seen Designs. Any persons reproducing this design in any form complete or part there of must seek permission from Sew To Be Seen Designs or they will be infringing copyright.

I suggest, you read through all the instructions first before you start any stitching. This way, you will have an idea on how the project works.
Work the Kloster Satin stitches, all Motifs and Backstitch before you attempt any cutting. This way, you won't disturb the stitches that have been pulled out.

Always check, as you work the Kloster Satin stitches that they line up with those you have already worked. This is quite tedious, but it does save time & effort especially when you are learning.
For those of you who have worked 'Vine Bouquet' or 'Inspiration' beginners Hardanger project will know a little on how my projects work. You will have gained a little more confidence, than when you first started.

'Cottage Dreams' is one step up from those two beginners Hardanger projects. It's now time to move on, and learn more about the special stitches in my designs.

To gain perfection on how to work the stitches, you could always practice them first on an old piece of even weave fabric, and use up any odd threads you may have collected in your sewing basket. When working the Motifs, never pull the stitches too tight. You want them looking neat and full on the fabric. Stitches that have been pulled too tight will look uninteresting and lie flat on the fabric.

Tools

You need a good sharp pair of Hardanger scissors (they have a curl at the end, which is very useful when picking up fabric threads). A pair of tweezers is a very useful tool; this helps grip the cut fabric threads. A good quality tapestry needle. Size 24 is a good size to allow the Perle #8 through the eye.
For the other stitches that are worked in silk, I used a size 26 tapestry needle.

Frames

You will need a good quality frame. I always use a frame when stitching Hardanger embroidery. This helps keep a good tension, for neat stitches. I use a white R & R Craft Frame, which are light & clean, and don't mark the fabric. For this project, I suggest a size 11 x 11 inches. Your design will then fit into the centre, and you have no need to move the bars up and down.

Threads

For this design, I have carefully chosen a variety of silk threads. I have used South African Perle #8 for the entire centre Kloster Satin stitches. This thread is a dream to work with. I have chosen 'Silk N Colours' from The Thread Gatherer, to work some of the Motifs along with Pearsalls Silk Thread. I have also chosen Kreinik metallic gold thread. This adds interest and sparkle to this design. This is a little difficult to work with if you are not used to it. However, if you use short lengths, it should be a little easier. It won't fray quite so much.

Fabric

I have chosen 28 count Antique White Jobelan for this project. I love the colour and its rich texture. It works well with the Perle #8 thread, and the silks that I have chosen.

A Few Tips

Never change to a new thread in the middle of a Kloster Satin stitch.

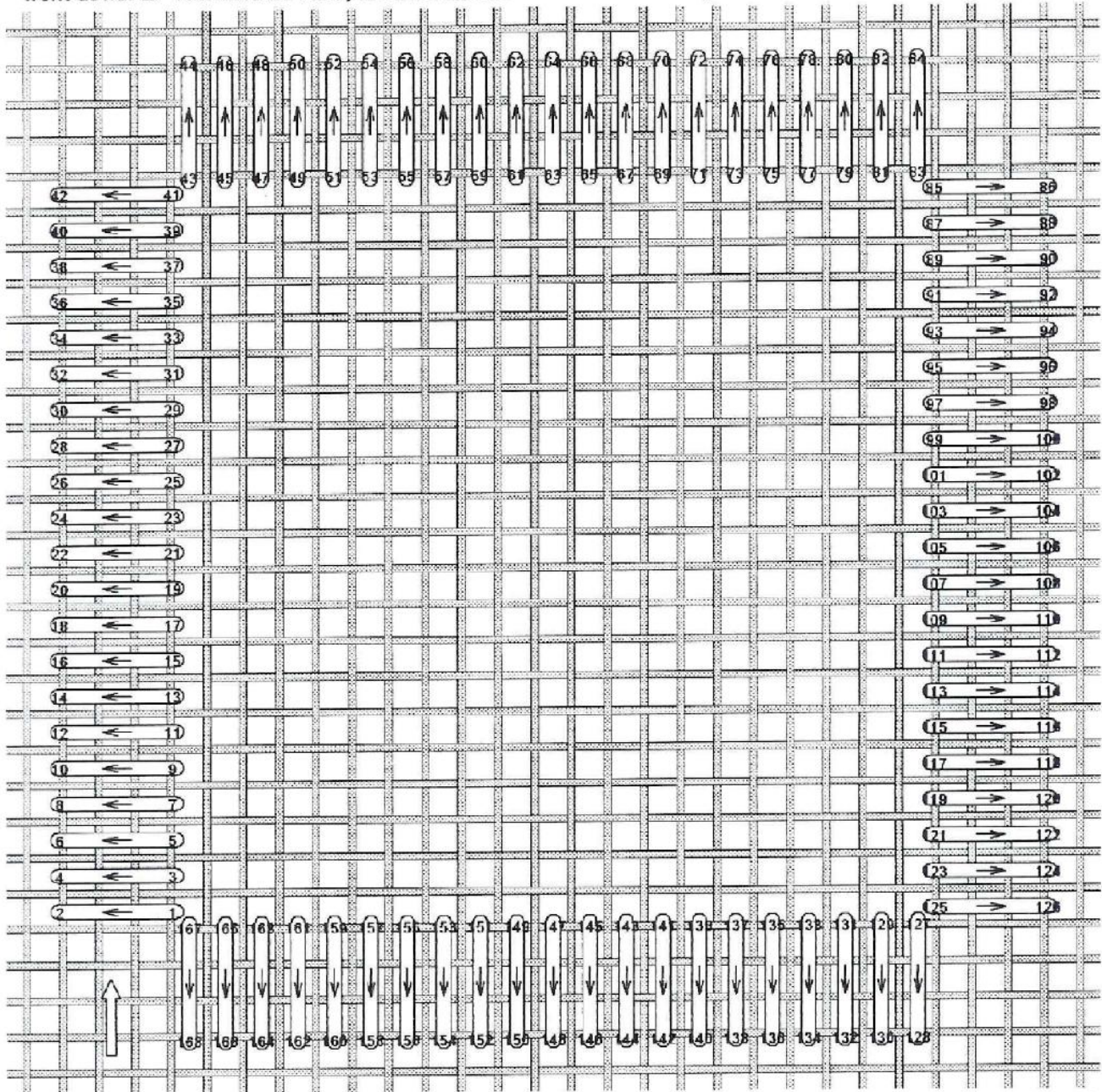
Always check the back of your work. Perle cotton can twist sometimes and knot at the back. If you leave the knot unchecked then it may appear later, once you have cut the fabric threads. To cast off your old thread, make sure you run it through the Kloster Satin stitches at the back, also make sure you don't have any loose ends showing, again they may show through the cut fabric threads later.

Finally, I know we designers have said it before, but always work with nice clean hands. Keep your work away from coffee & tea etc. When you are not working on your project, keep your work in an old clean pillowcase or wrap it in a towel. You will be surprised at the difference.

If you need to wash your work, use a very mild detergent, and only use very tepid water. If the water is too hot, then it could make the colours run from the threads. Never rub your embroidery, just leave it in to soak for a short while. I always rinse my work in cold water. Let it drip for a while, then lay your project flat on a nice clean towel and leave to dry naturally over night. Always press your work with a thinner tea towel, and lay it over the back of your work. Never press your work over the top of your stitches. Your stitches will flatten, and you will not be able to restore the way they were stitched.

Kloster Satin Stitches - Lesson 1

We are going to start with the four Kloster Satin boxes in the centre of your design. Fold the fabric in half, then half again. Mark the centre of the fabric with a little Backstitch using a different coloured thread. Using one strand of Perle #8 - Ecu, work an away knot, go through to the back, and count over two fabric threads to the right, then count over two fabric threads upwards. Bring the needle & working thread to the front at no. 1. You are now ready to work the first Kloster Satin box (This is the centre box on the right).

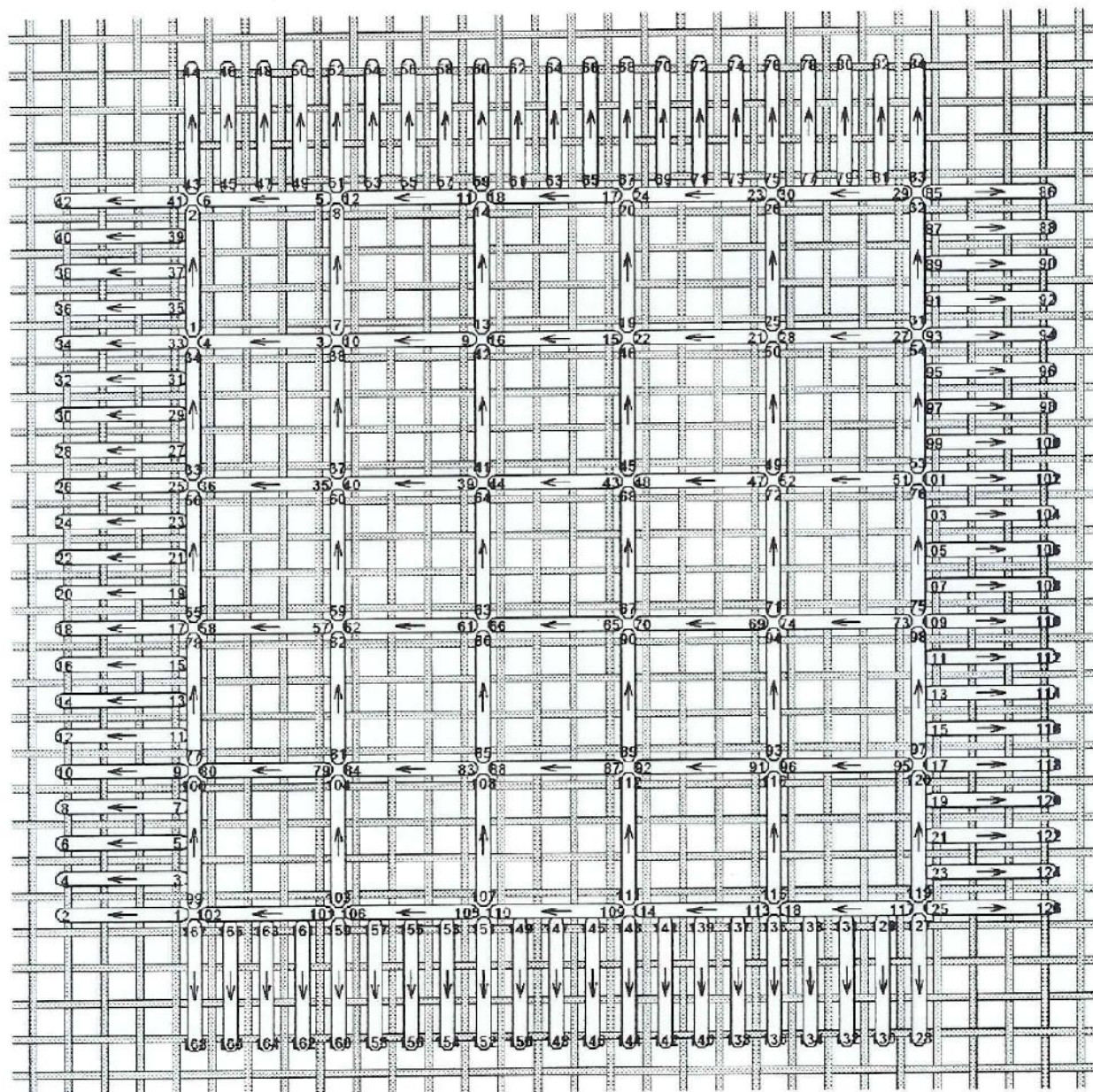


The above diagram shows the full Kloster Satin box. The arrow shows the centre on your fabric. Bring the needle & working thread to the front at 1, count over four fabric threads, and go down at 2 (this will always be the 5th hole). There are 21 Satin stitches to work on all four sides of the box. Continue in this way, until you have worked the full Kloster Satin box. Follow the numbers carefully from the above diagram. Keep an even tension at all times.

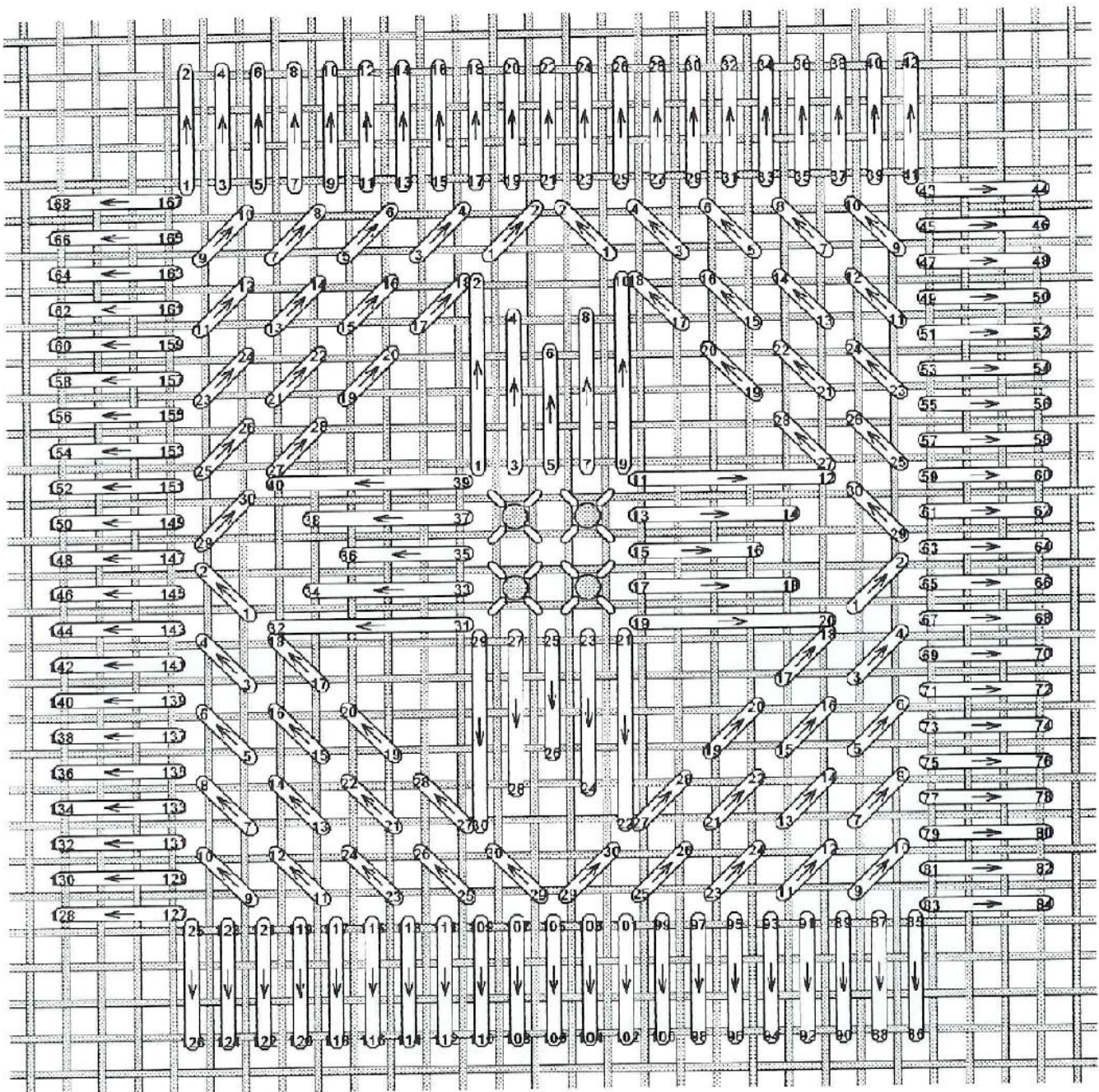
Working in a clockwise direction, continue to work the remaining three Kloster Satin boxes. Each one is worked in the same way. Refer to the main graph for stitch placement, but follow the stitch diagram on page 2. On completion, you will have four boxes in the centre.

Four Sided Square - Lesson 2

In each of the four centre Kloster Satin boxes, you need to work the Four Sided Square stitch. Thread the needle with two strands of Honey Mauve, and from hole number 43, count downwards over four fabric threads, and go down at 2 (This shares the same hole as no. 43). At this point, pull firmly. Bring the needle to the front at 3, and go down at 4 (This shares the same hole as no. 1). Pull firmly. Continue to work this way until you have covered the inside of the Kloster Satin boxes with Four Sided Square stitches. Follow each number on the stitch diagram below. Each time you bring the needle to the front, pull firmly. This creates a lacy effect. Each of the four boxes is worked in the same way.

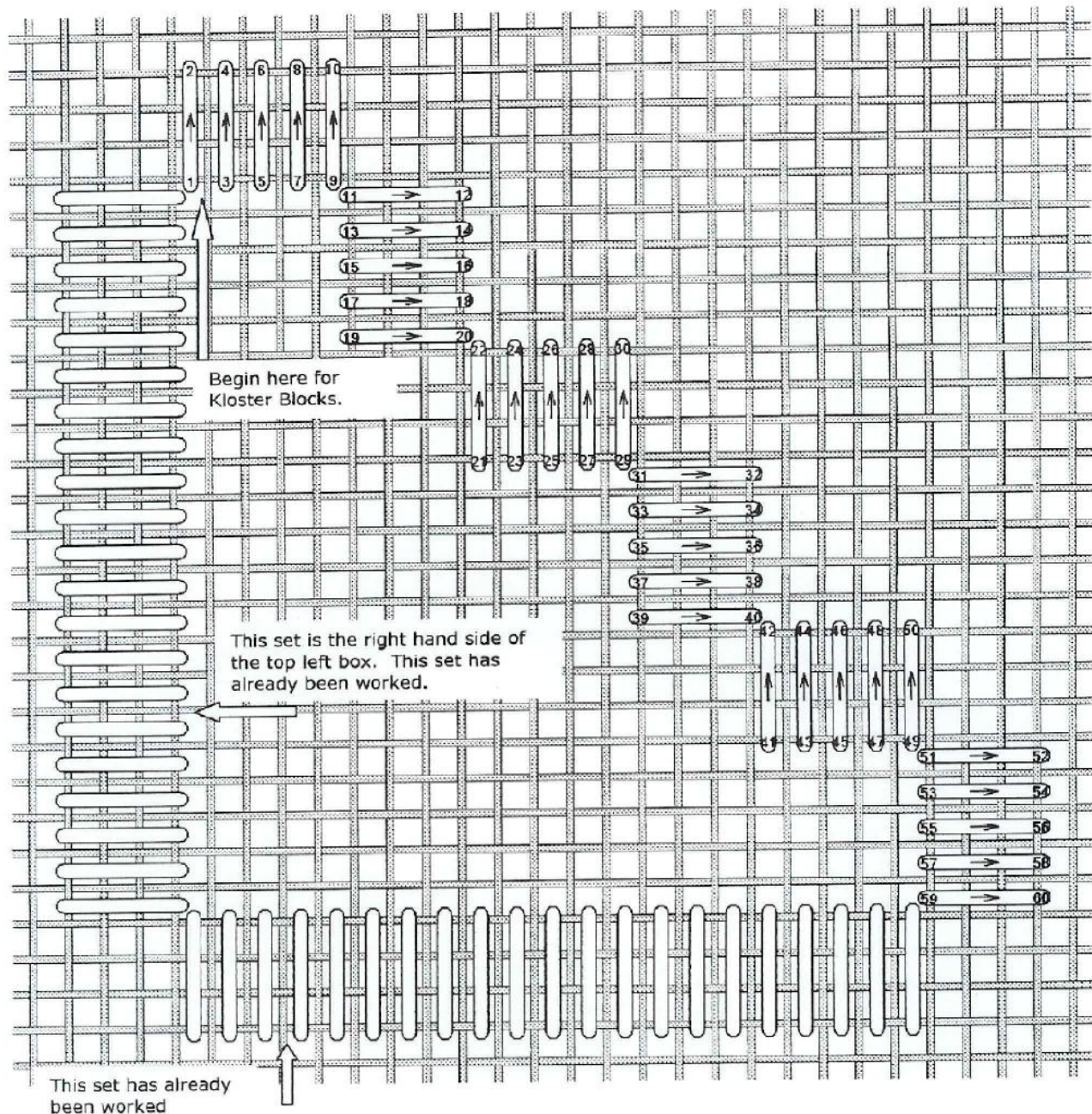


The 4 Outer Satin Kloster Boxes- Lesson 3



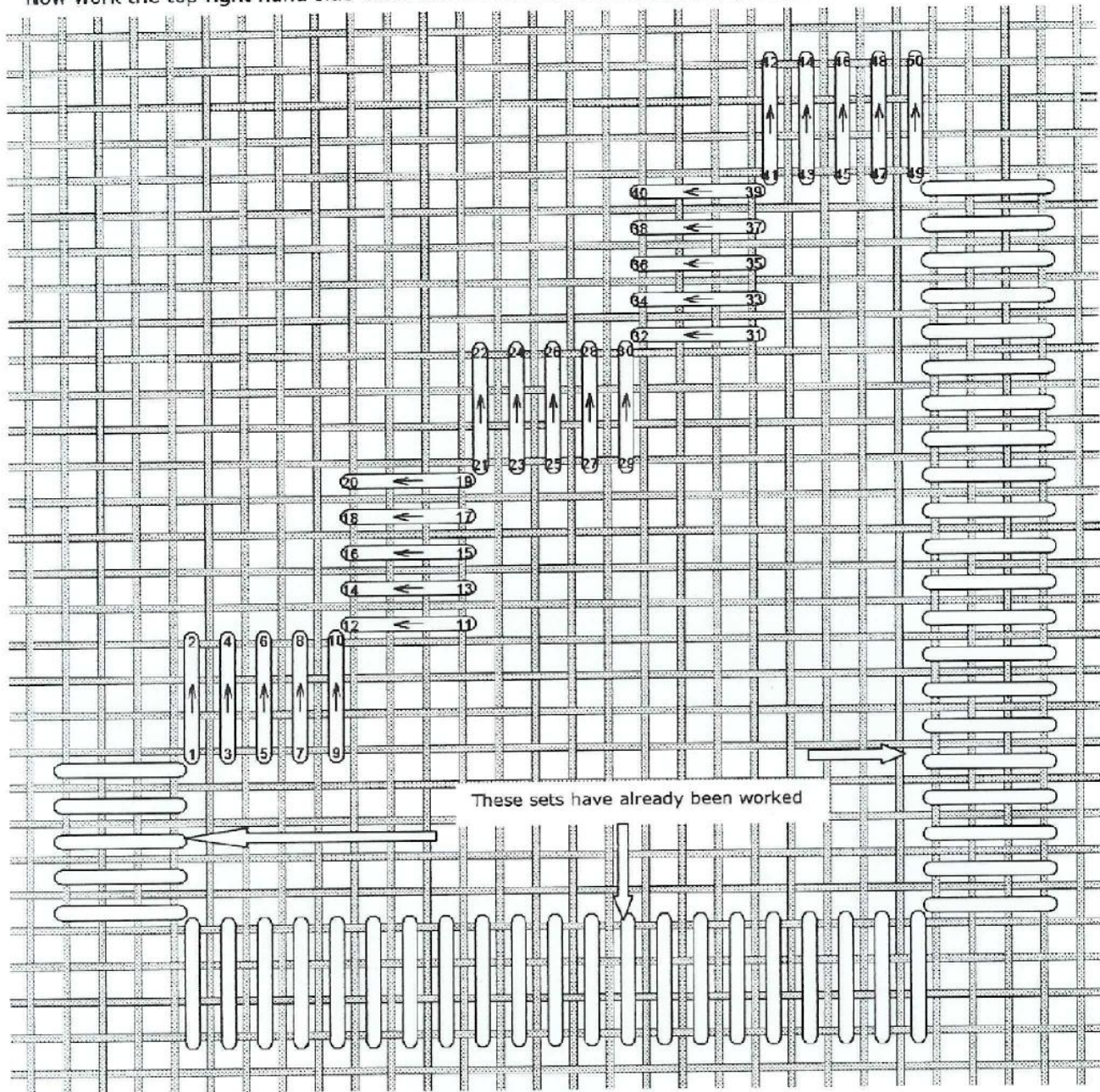
Use one strand of Perle #8 -Ecrú to work the Satin Kloster box as you did for the four centre ones. To work the pulled Backstitch in these 4 outer boxes use two strands of Honey Mauve. Work the Backstitch over two fabric threads and pull firmly each time you bring the needle to the front to work the next stitch. Follow the number sequence from the above diagram for each box. To work the Flower Satin Motif in the centre of these boxes, use two strands of Lt. Rose - 078. Note the placement for the pearls in the centre of each Flower Satin Motif.

Kloster Blocks - Lesson 4



Bring the needle through at no. 1 to work the six sets of Kloster Blocks down the right side of this section. Count upwards over four fabric threads, and go down at 2. (This will be the 5th hole). Work four further Kloster Satin stitches in the same way, your needle will now be at the back at 10. Bring the needle back up to the front at 11 (This shares the same hole as 9). Count over four fabric threads to the right, and go down at 12. Work in this way until your needle is at the back at 60. Cast off your thread. Top left side is now complete. The above diagram shows how the Kloster shape will look, after the top left hand side is worked.

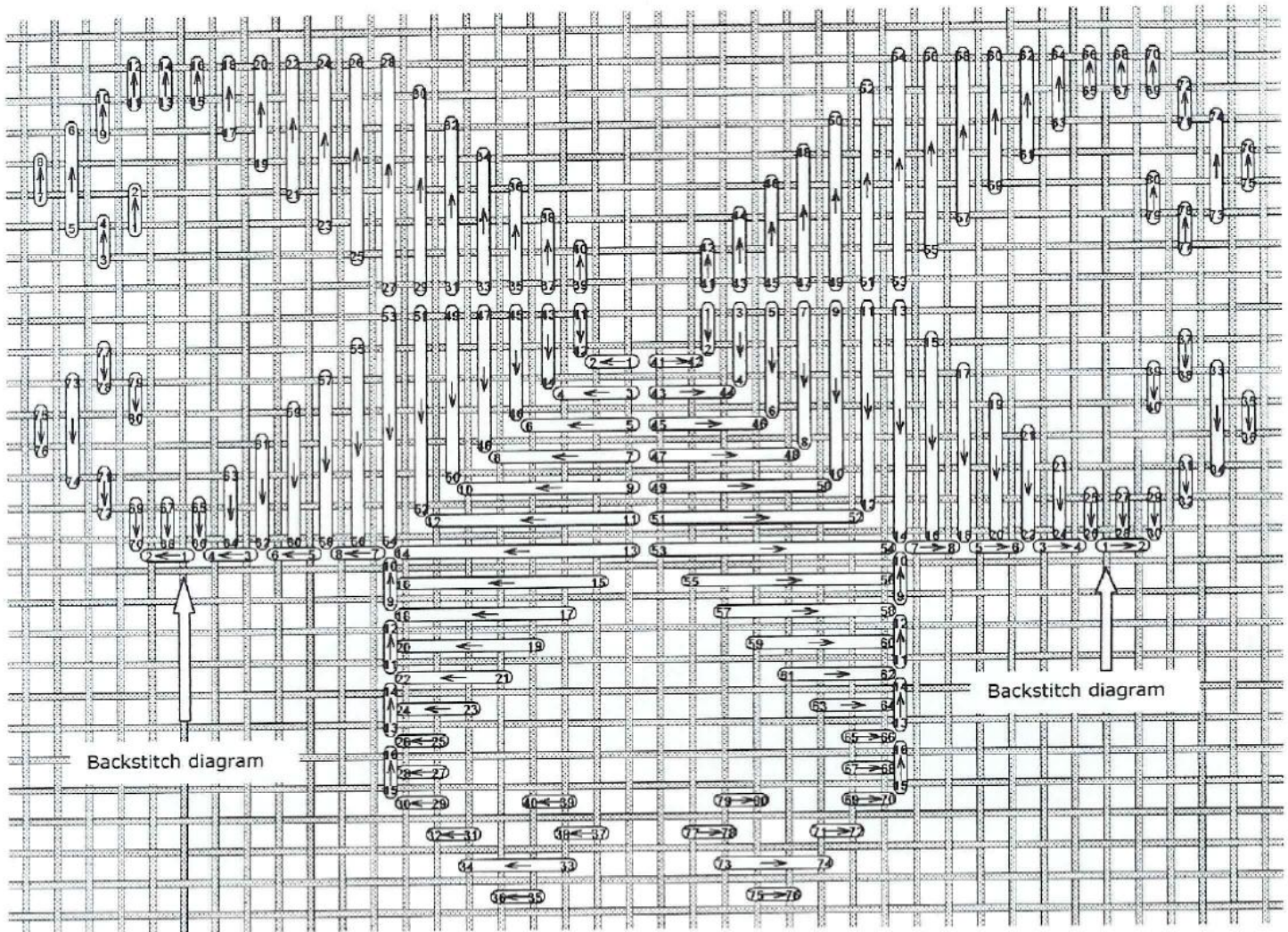
Now work the top right hand side Satin Kloster blocks in the same way you did for the left hand side.



Use one strand of Perle #8 -Ecu as before, bring the needle & working thread to the front at 1 (This shares the same hole as 52) and go down at 2 (This will be the 5th hole). Continue to work a further four Kloster Blocks, then continue to a further four sets of Kloster Blocks. Top right hand side complete. Now work the remaining six sets of Hardanger sections. This forms the centre square; work each one in the same way using the same thread. Turn the diagram clockwise to work each one. At this stage, the whole centre square is now complete. Do not cut these areas until lesson 11.

To Work The 4 Centre Motifs – Lesson 5

For these four Motifs, use two strands of 'Prairie Winter'. The four Motifs are all stitched in the same way. Refer to the diagram on page 7, for working instructions.

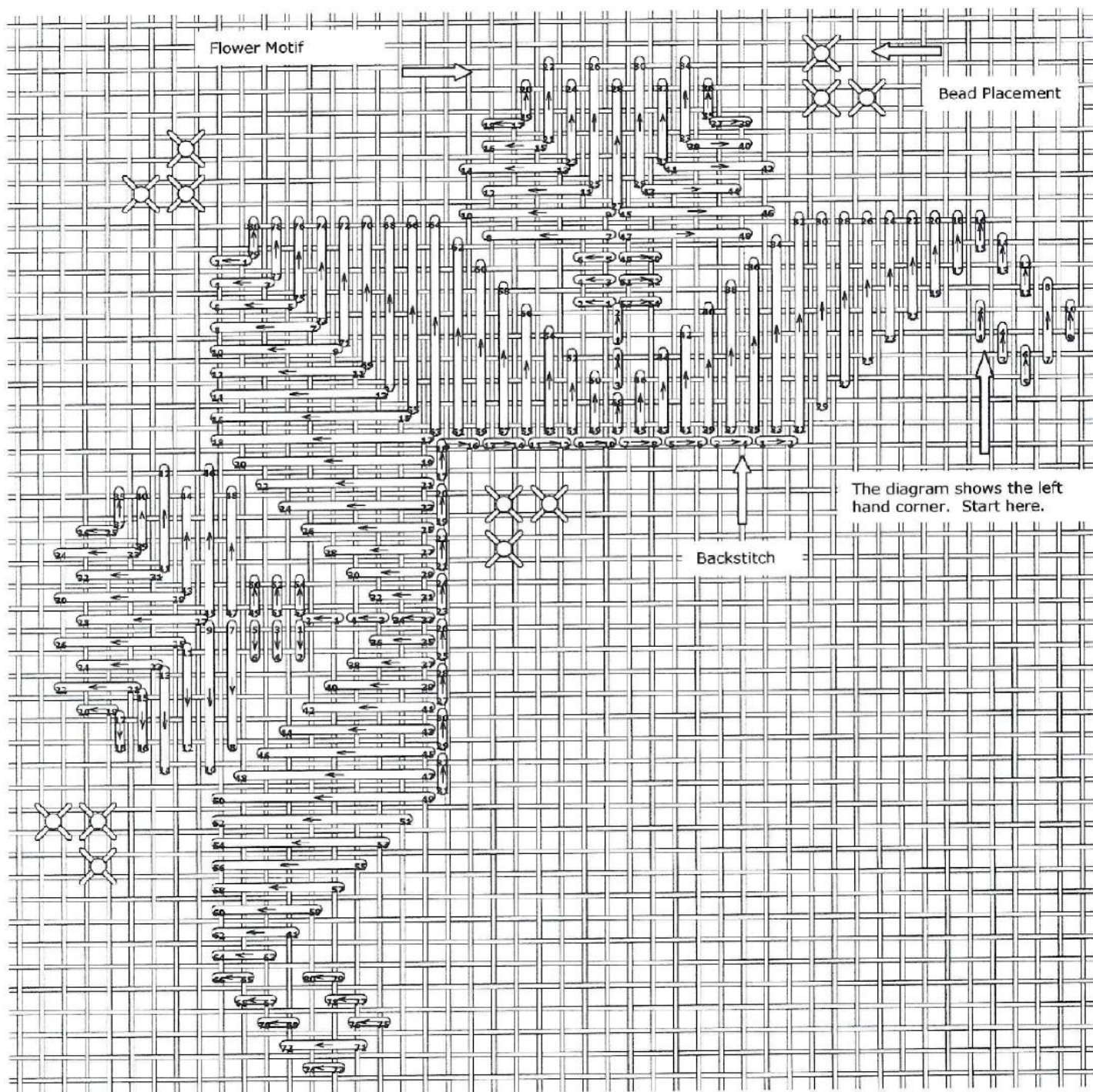


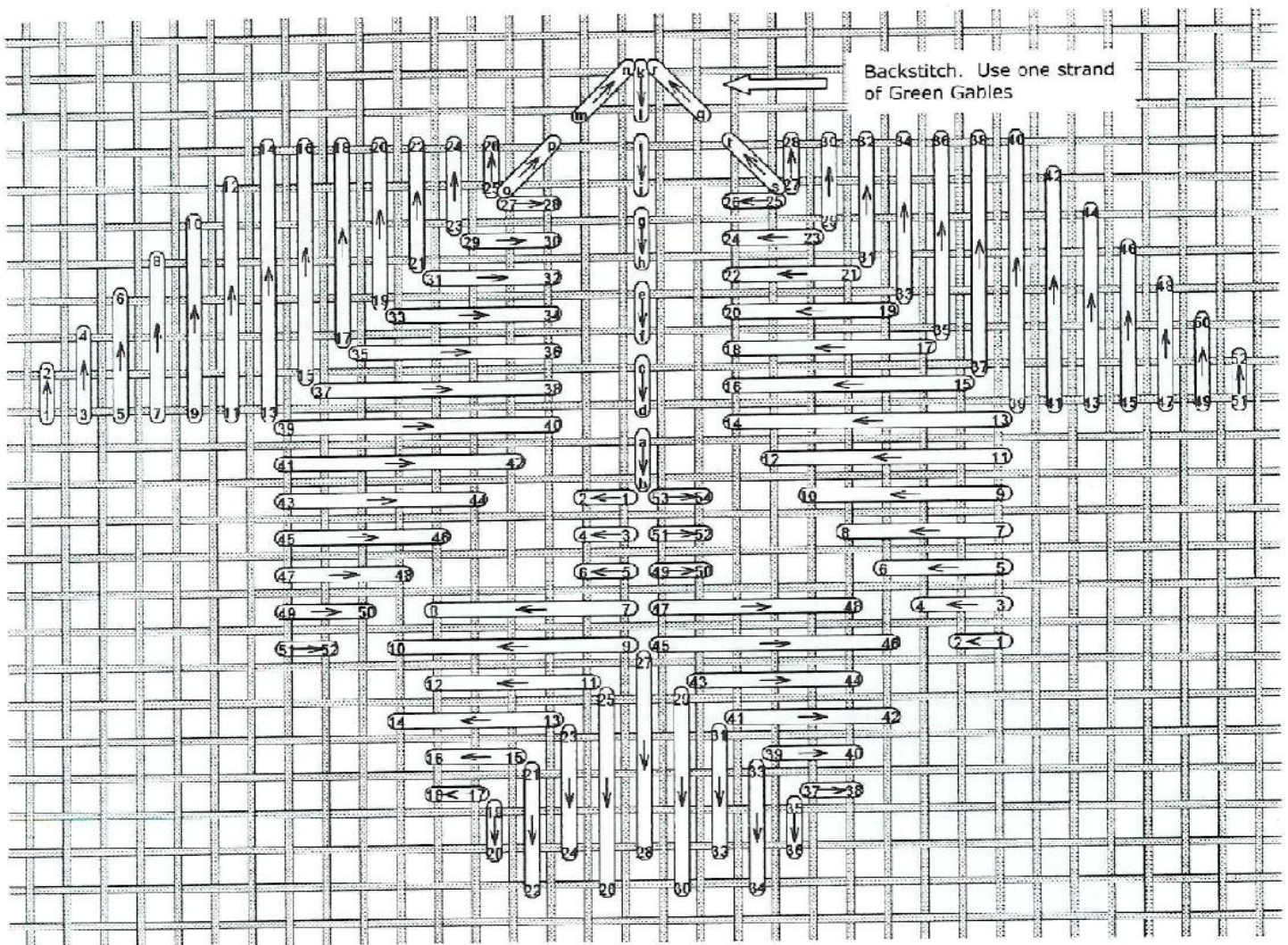
Follow the number sequence carefully. The above diagram shows full Motif when stitched. Don't pull the stitches too tight. To work the Backstitch use one strand of Kreinik #4 braid – 013. After working these four Motifs, you will now have a good placement guide for the remaining stitches.

The 4 Large Corner Motifs – Lesson 6

For these Motifs, use two strands of Prairie Winter. For the two flowers, use two strands of Honey Mauve. Backstitch the stems on the two flowers using one strand of #4 Braid – 013. The diagram on page 8 shows the full Motif when stitched. Follow the number sequence for each part of this stitch. Take your time. Work the large part of the Motif first, then work the two flowers, and then complete the Motif by working the backstitch using one strand of #4 Braid – 013. Also note on the diagram, how the bead placement will look. Turn the diagram clockwise to work the remaining three Motifs. Each Motif is worked in the same way.

The diagram below shows the full 4 Corner Motifs. Refer to page 7 for working instructions.





The 4 Centre Flower Motifs – Lesson 7

To work these Motifs, use two strands of Lt. Rose – 078. Follow the number sequence carefully, and try not to pull this Satin stitch too tight.

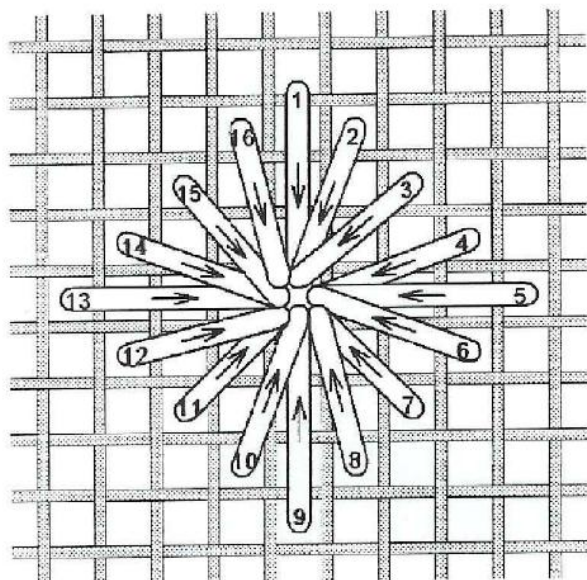
Turn the above diagram clockwise to work the remaining three Motifs. They are all worked in the same way. The above diagram shows full Motif when stitched.

Backstitch Vines – Lesson 8

Follow the lower case letters to work the Backstitch, which are worked over two fabric threads. Again, try not to pull the stitch too tight. All the vines around the design are worked using one strand of Green Gables. This is a variegated thread, and gives interesting shades when stitched.

Diamond Eyelets – Lesson 9

There are 8 Eyelets in total. Worked just underneath the outside Satin stitches. All Eyelets are worked in the same way. Use one strand of #4 Braid – 013 for each one, pulling firmly when you bring the needle to the front. This creates a small hole in the centre. If you pull too hard, the hole will become too large. It's a case of just getting the right tension. Have a practice first, on a piece of old fabric. Please note: – you will always take the needle through to the back – via the centre hole.

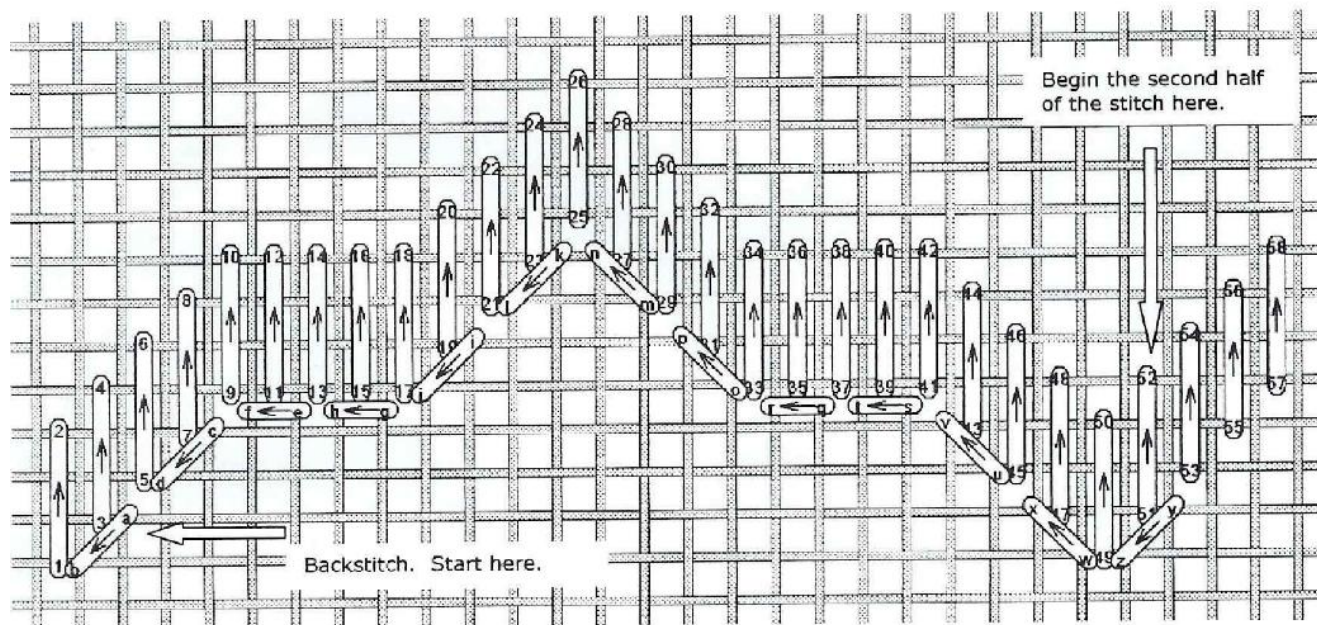


Bring the needle & working thread to the front at 1. Count down over four fabric threads (This will be the 5th hole, and you will always go through to the back in this hole). Count over one fabric thread to the right, then one fabric thread down, and bring the needle to the front at 2. Repeat until Eyelet is complete. Diagram to the left shows full stitch.

The 4 Outer Satin Stitches – Lesson 10

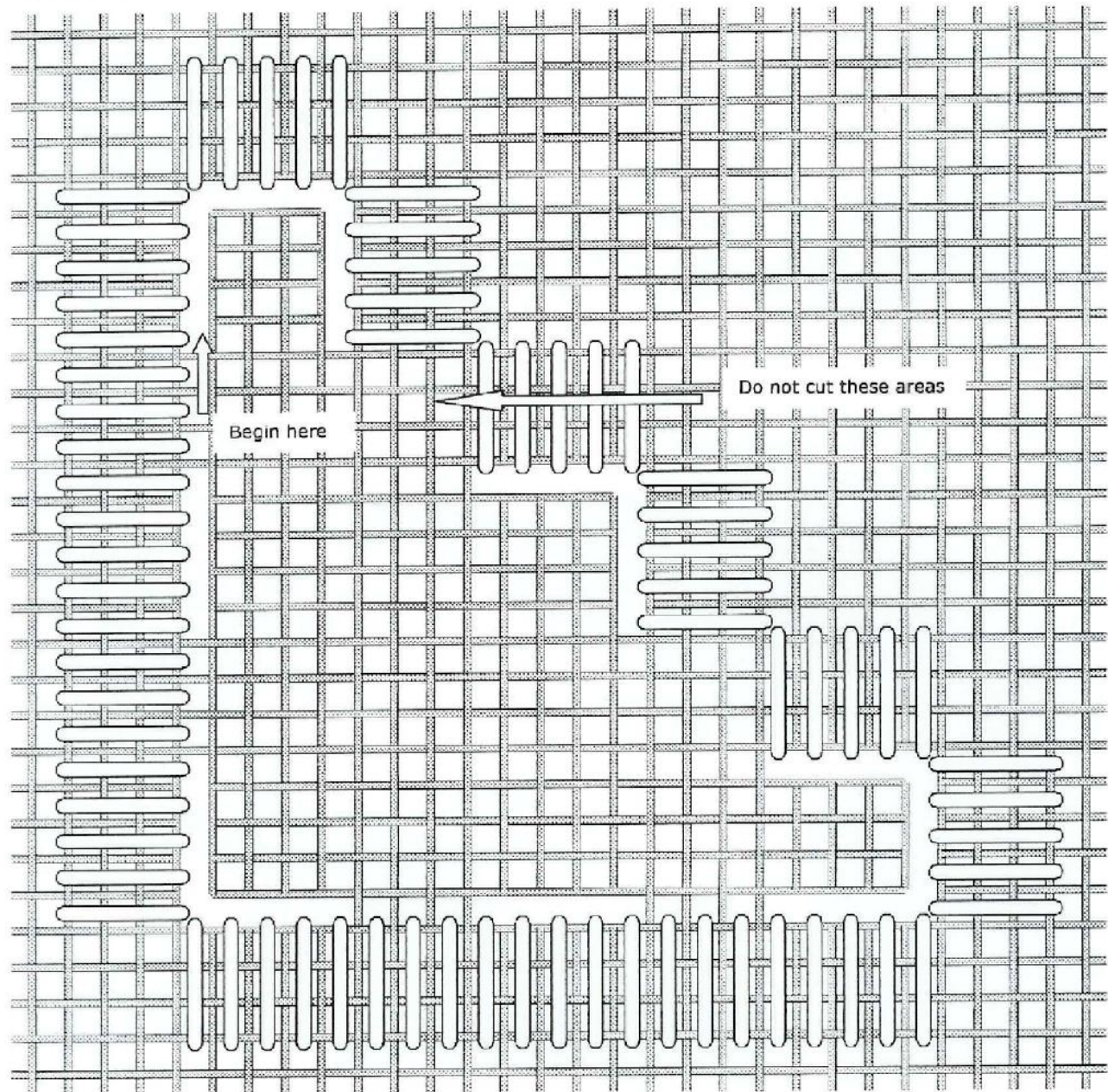
For this stitch, use two strands of Honey Mauve. For the Backstitch, (follow lower case letters) use one strand of #4 Braid – 013.

Once again, try not to pull this Satin stitch too tight. The diagram below shows only half of the stitch, work the remaining half in the same way.



At this point all Satin Kloster boxes, Kloster Blocks, Motifs & Backstitch should now have been worked.

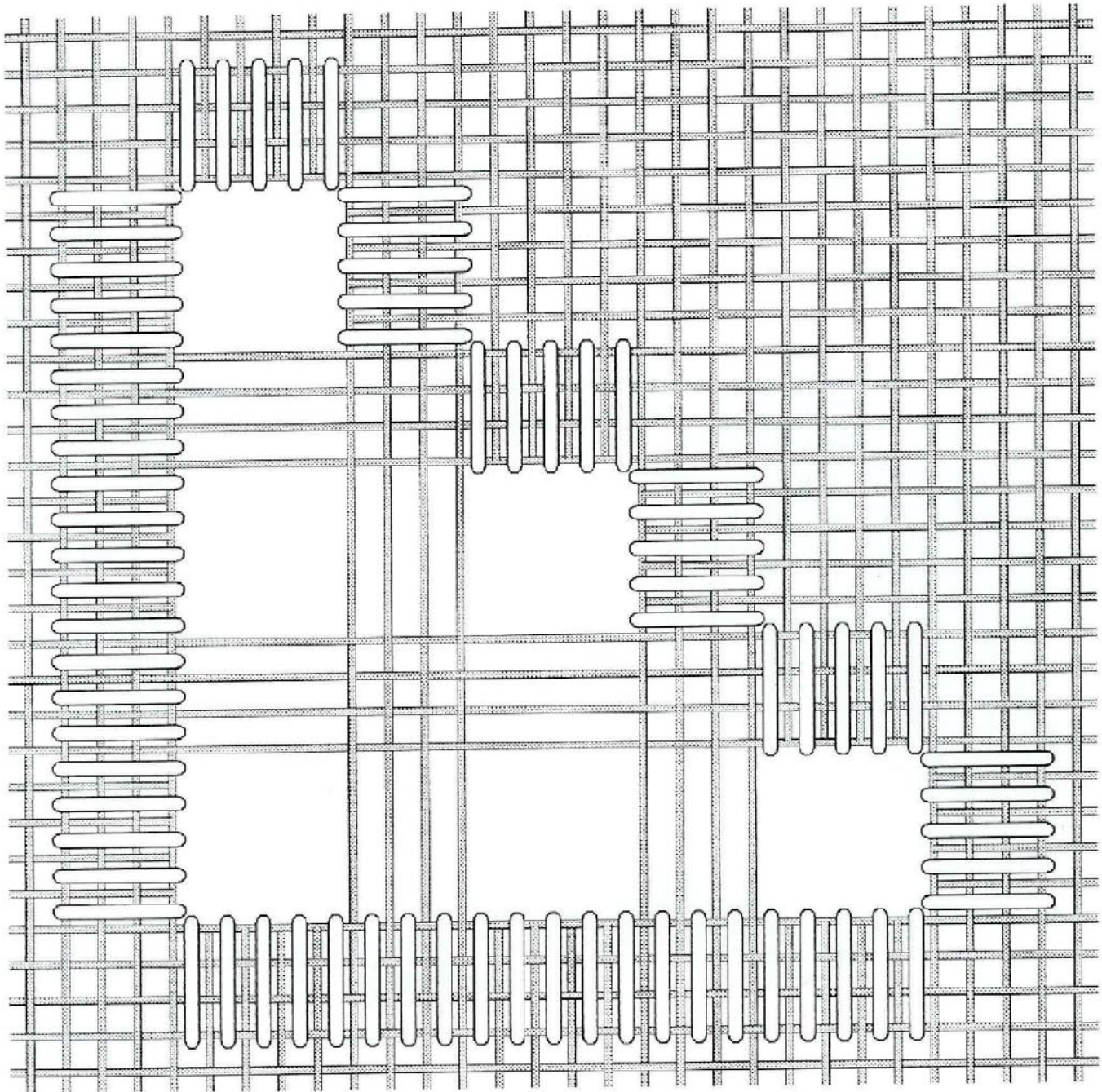
Cutting Areas - Lesson 11



The blank areas on the above diagram are the areas to be cut. Use a good quality pair of Hardanger scissors. Cut four fabric threads to each blank area. Cut one fabric thread at a time, this way, you will have a nice clean cut, and no fluffy edges. Always work in a clockwise direction. Complete one section first, before moving onto the next. Do not cut any fabric threads to the none blank areas.

Withdrawing The Fabric Threads - Lesson 12

Once all the fabric threads in each cutting area have been cut, take a pair of tweezers (this helps grip the fabric threads more easily) and gently withdraw each cut fabric thread. At this point, please make sure that all the fabric threads have been cleanly cut. The diagram below gives you some idea, what your fabric will look like after withdrawing the fabric threads.



Wrapped Bars – Lesson 13

Using one strand of Perle #8 – Ecu, knot the end of the thread and take it down to the back (see diagram below) with the knot lying on the top. Bring the needle & working thread to the front into the first large hole (see diagram below) your working thread will be at the back of your work and you will now have five threads to wrap instead of four. Now take the needle under the five threads as in diagram 2 and work under, and then back over then under. Work in this way until you come to the end of the bar, and then slip the needle under towards the next bar. Turn your work round and carry on as before. Don't forget to cut the knot once you have wrapped a couple of bars. Continue working until all the bars have been wrapped.

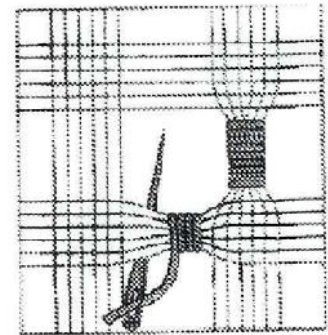
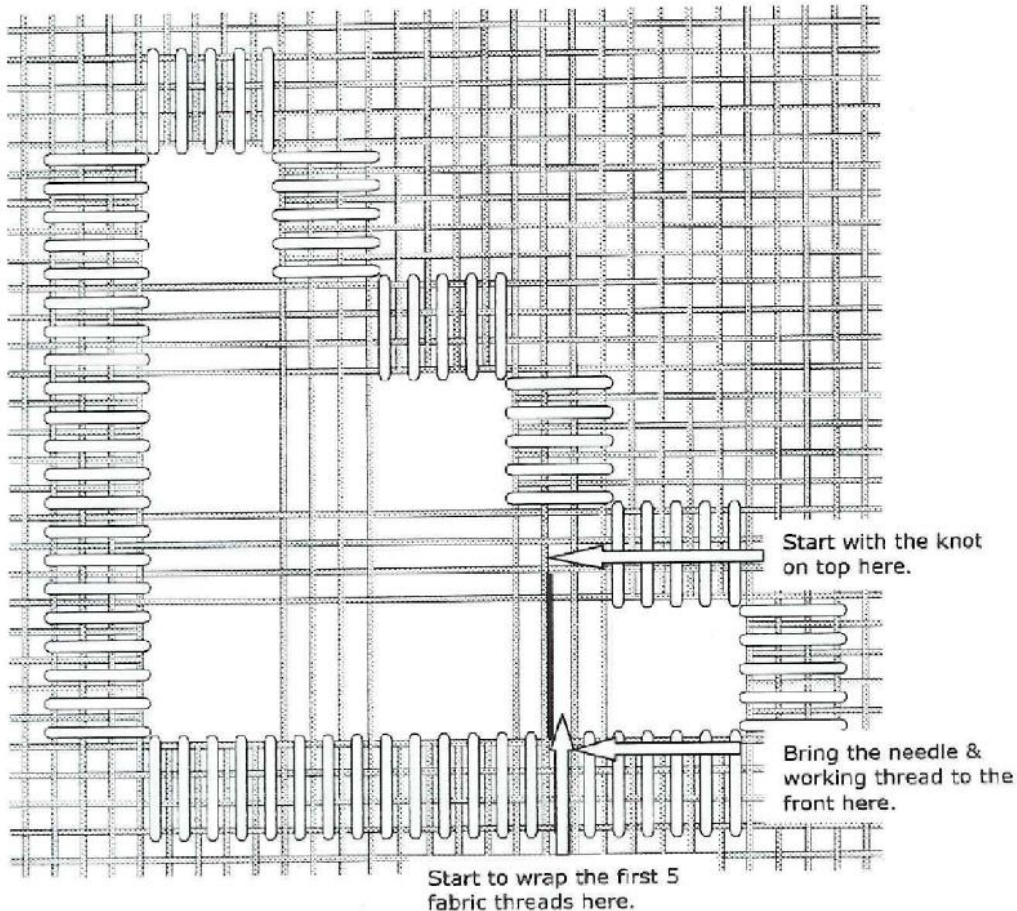


Diagram 2

The remaining seven areas to cut are all worked in the same way. Work in a clockwise direction.

Attaching Beads.

Using double soft cream sewing thread, attach all beads according to bead symbols. After attaching around 5 – 6 beads, work a little Backstitch at the back of your work. This will help keep the beads firmly in place.

Cottage Dreams is now complete. I do hope you enjoyed stitching this next step up from *Vine Bouquet & Inspirations* – Well done! – Judy

COTTAGE DREAMS

A HARDANGER TEACHING PROJECT



Sew To Be Seen Designs

Judy Dixon

2004